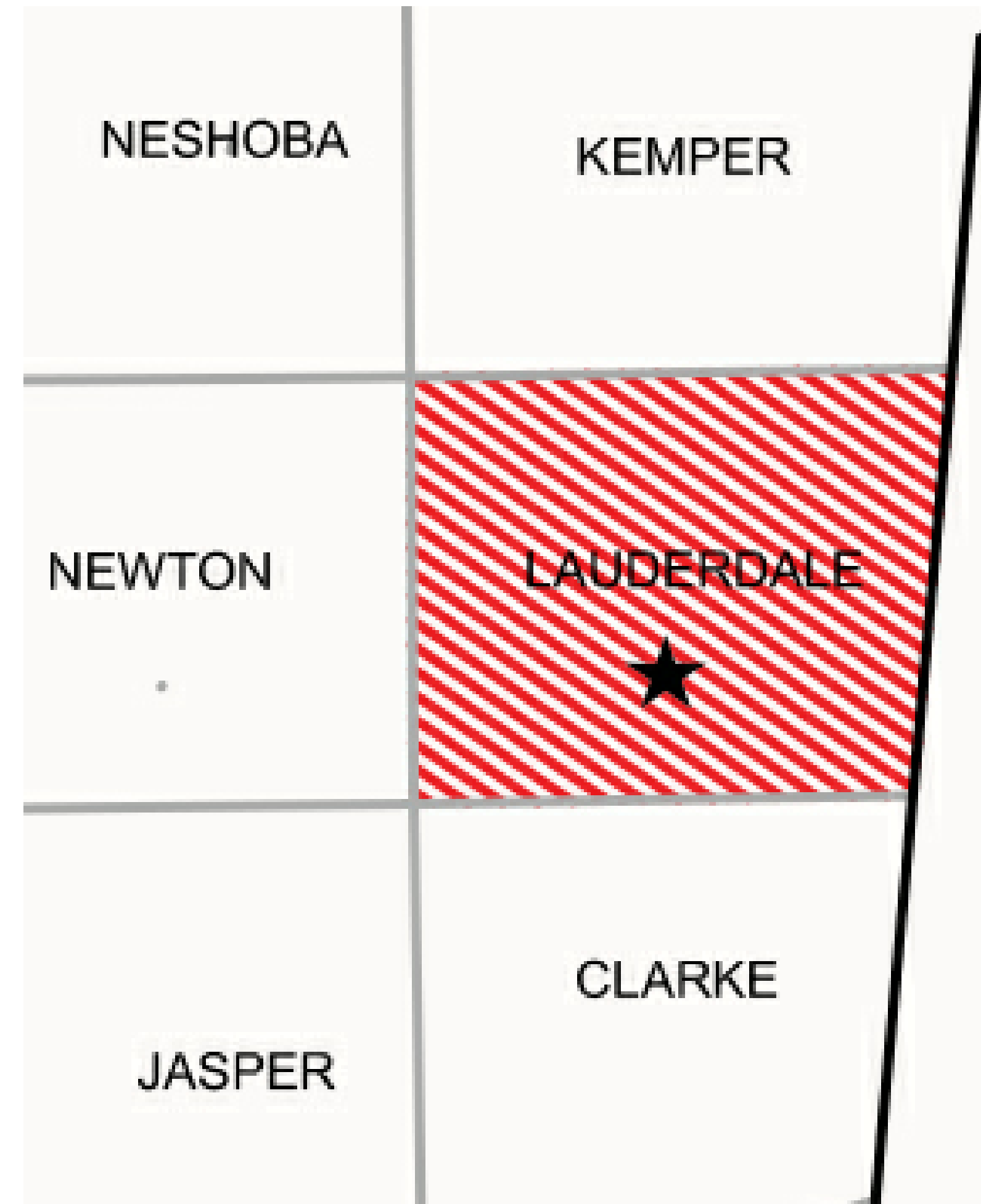
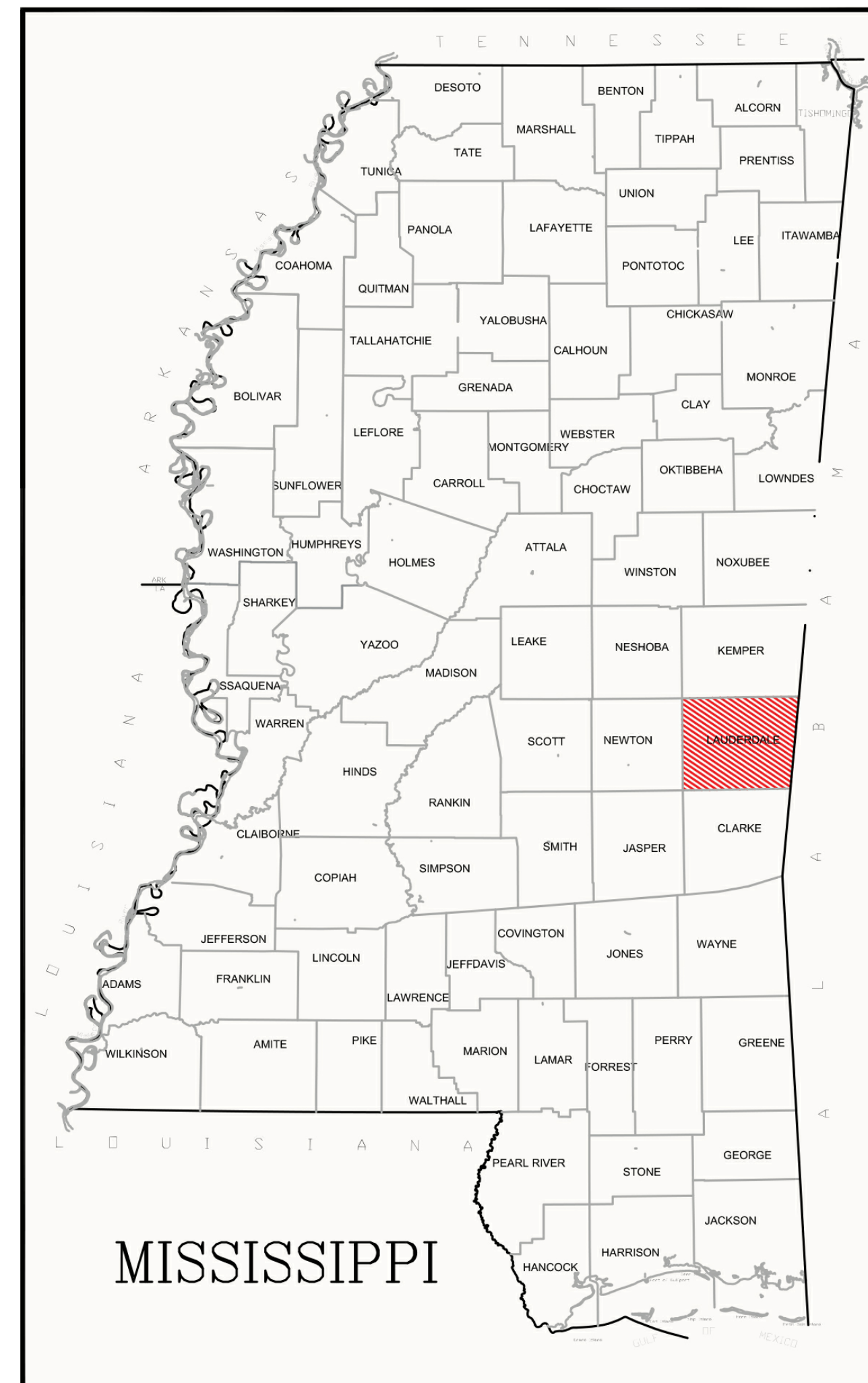


LAUDERDALE COUNTY HEALTH DEPARTMENT WIC RENOVATION MISSISSIPPI



INDEX OF DRAWING	
Sheet Number	Sheet Name
A1	EXISTING/DEMOLITION PLAN
A2	PROPOSE FLOOR PLAN
E1	PROPOSED ELECTRICAL PLAN
E2	PROPOSED POWER PLAN
E3	ELECTRICAL DETAILS
E4	Unnamed
M1	PROPOSED MECHANICAL
T1	COVER SHEET

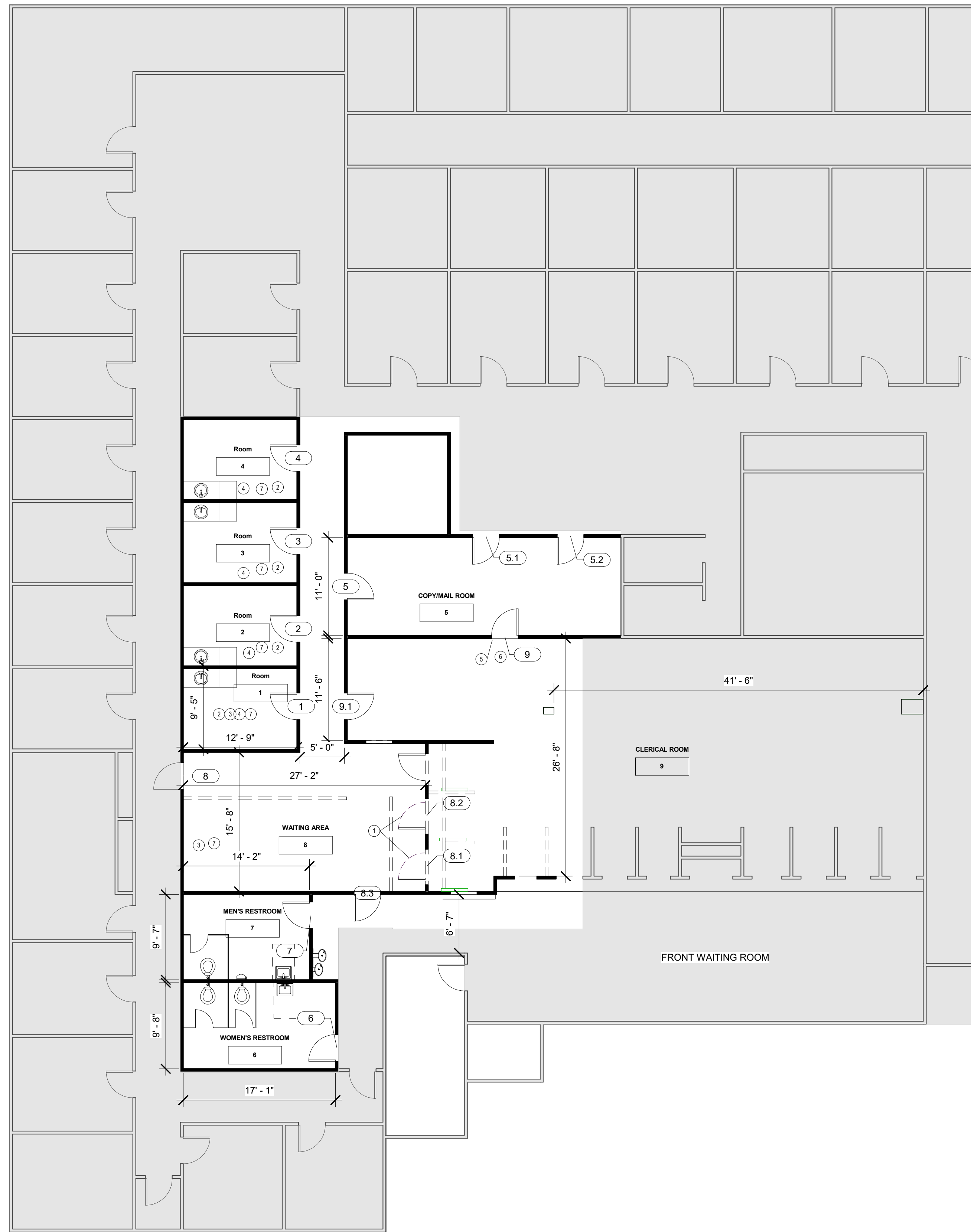
PROJECT TITLE/LOCATION
LAUDERDALE COUNTY
HEALTH DEPARTMENT
MERIDIAN, MS

REVISIONS	DESCRIPTION	DATE

DRAWN	DESIGN	CHECK	SUBMIT	SCALE	PLOTTED

COVER SHEET

T1



① Level 1
1/8" = 1'-0"

DEMOLITION KEYNOTES	
]	Description
1	REPAINT EXISTING DOOR AND FRAME
2	EXISTING MILLWORK/DESK TO BE REMOVED.
3	EXISTING FLOORING AND BASE TO BE REMOVED.
4	REPAINT ROOM
5	EXISTING FLOOR AND FRAME TO REMAIN.
6	REMOVE EXISTING DOORS
7	REMOVE VCT
8	REMOVE CEILING TILE AND GRID
9	ADJUST CEILING TILE TO MATCH PROPOSED LAYOUT
10	INSTALL NEW VINYL FLOORING
11	REMOVE EXSTING LIGHTS



HALL ENGINEERING, LLC

4607 WOMACK
JACKSON MS 39209

PROJECT TITLE/LOCATION
LAUDERDALE COUNTY
HEALTH DEPARTMENT
MERIDIAN, MS

SYMBOL	REVISIONS		DATE	
	DESCRIPTION			

DRAWN	DESIGN	CHECK	SUBMIT	SCALE	PLOTTED

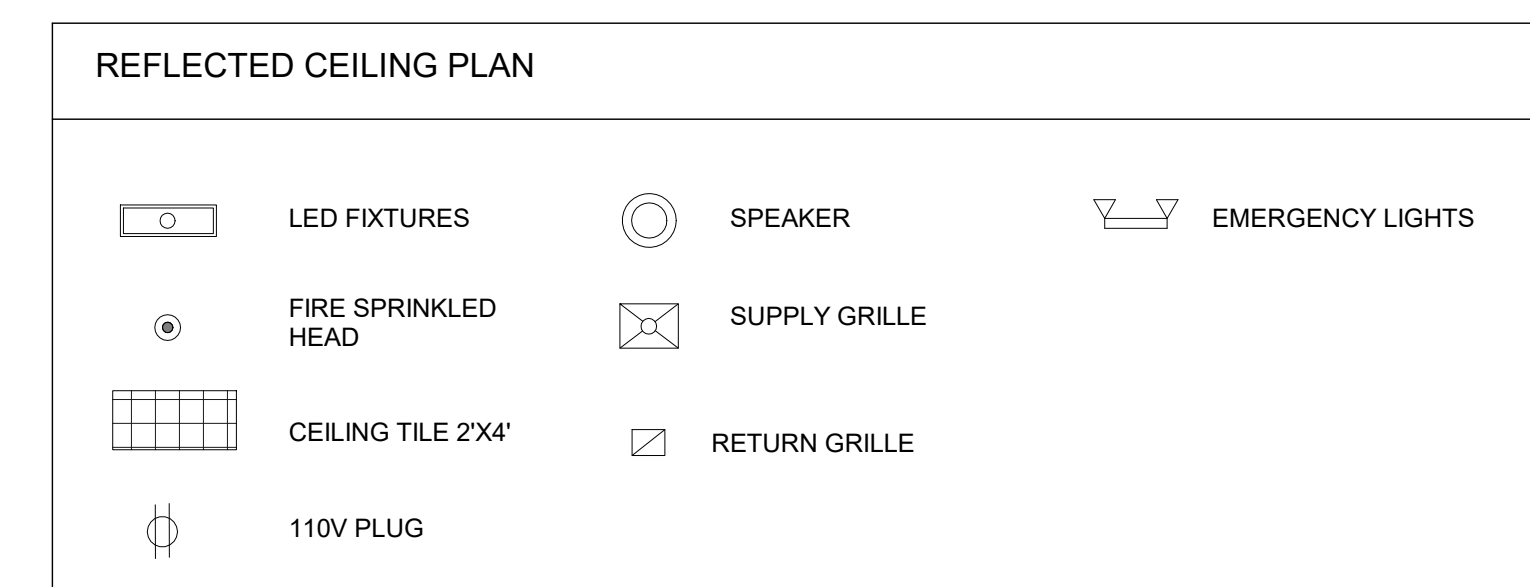
EXISTING FLOOR PLAN

A1

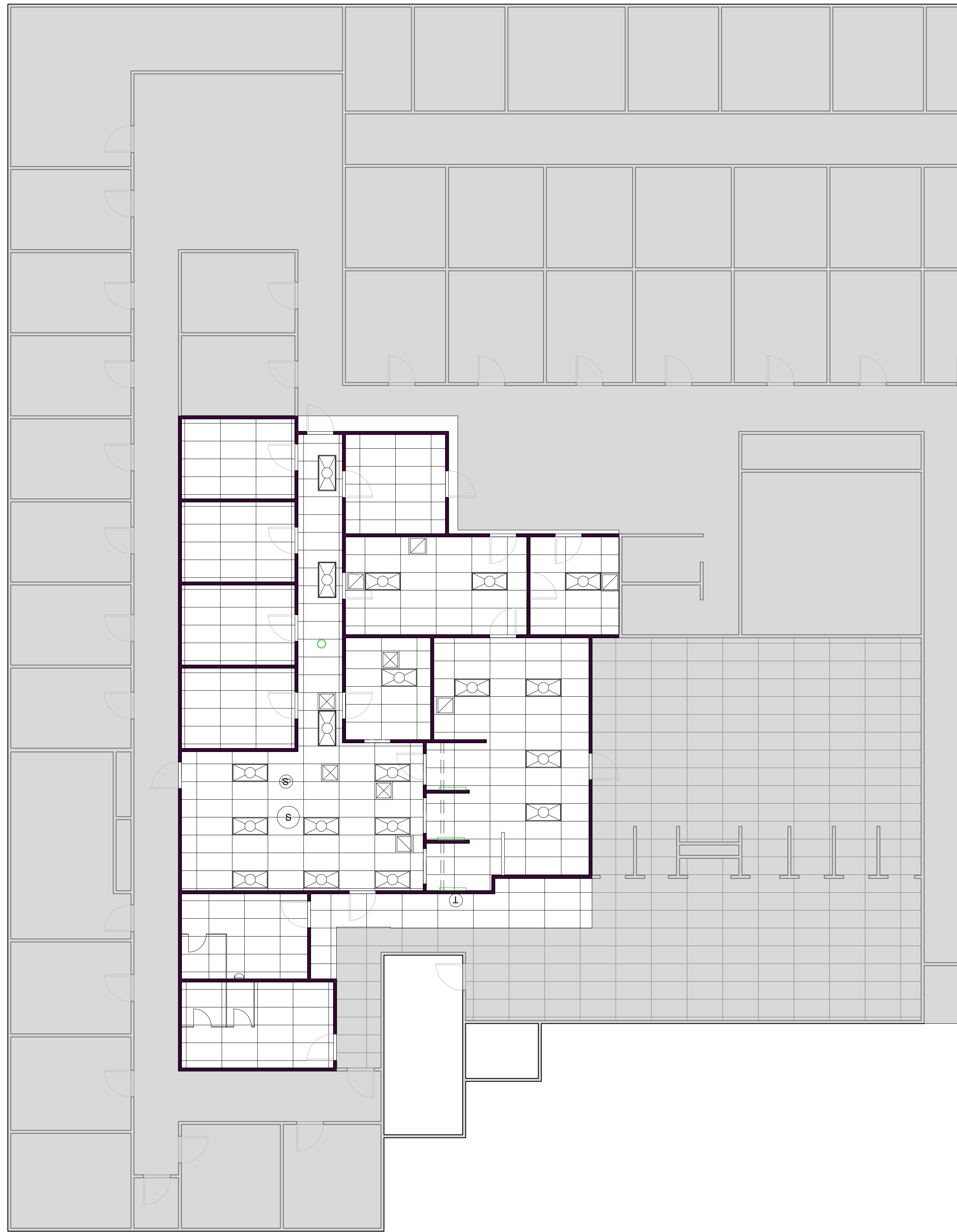


① Level 1
1/8" = 1'-0"

PROPOSE KEYNOTES	
KEYNOTES NUMBERS	Description
1	REPLACE RESTROOM FIXTURES: TOILETS/URNIALS,HAND SINKS, LIGHT FIXTURES
2	REPLACE PUBLIC WATER FOUNTAIN OUTSIDE MEN'S RESTROOM
3	PAINT DOOR & FRAME
4	INSTALL/REPLACE NEW LIGHTING
5	INSTALL 4X4 PASS THROUGH WINDOW
6	INSTALL NEW VINYL FLOOR FROM PUBLIC ELEVATOR INTO NEW WIC WAITING AREA
7	INSTALL NEW VCT
8	INSTALL NEW RUBBER BASE
9	INSTALL NEW CEILING TILES
10	REMOVE 2 DOORS TO CREATE OPEN CLERICAL/ RECEPTION WORKSTATION
11	REMOVE SMALL COUNTER & CLOSE UP RECEPTION WINDOW FACING ELEVATOR
12	INSTALL CEILING LIGHTS IN THE CLERICAL AREA
13	REPLACE COUNTER TOPS AT CLERICAL WORKSTATIONS
14	INSTALL NEW LOCKABLE FULL GLASS ENTRY DOOR INTO THE NEW WIC WAITNG AREA
15	ADDED NEW WALL AND DOOR ADD NEW WALL AND DOOR
16	INSTALL NEW LIGHTS
17	RE-SURFACE COUNTER TOPS



SYMBOL	REVISIONS		DRAWN		SCALE		PLOTTED	
	DESCRIPTION	DATE	DESIGN	CHECK	SUBMIT	SCALE	SCALE	PLOTTED



① Level 1
1/8" = 1'-0"

REFLECTED CEILING PLAN					
	LED FIXTURES		SPEAKER		EMERGENCY LIGHTS
	FIRE SPRINKLED HEAD		SUPPLY GRILLE		
	CEILING TILE 2'X4'		RETURN GRILLE		
	110V PLUG				

REVISIONS	DESCRIPTION	DATE

DRAWN	DESIGN	CHECK	SUBMIT	SCALE	PLOTTED

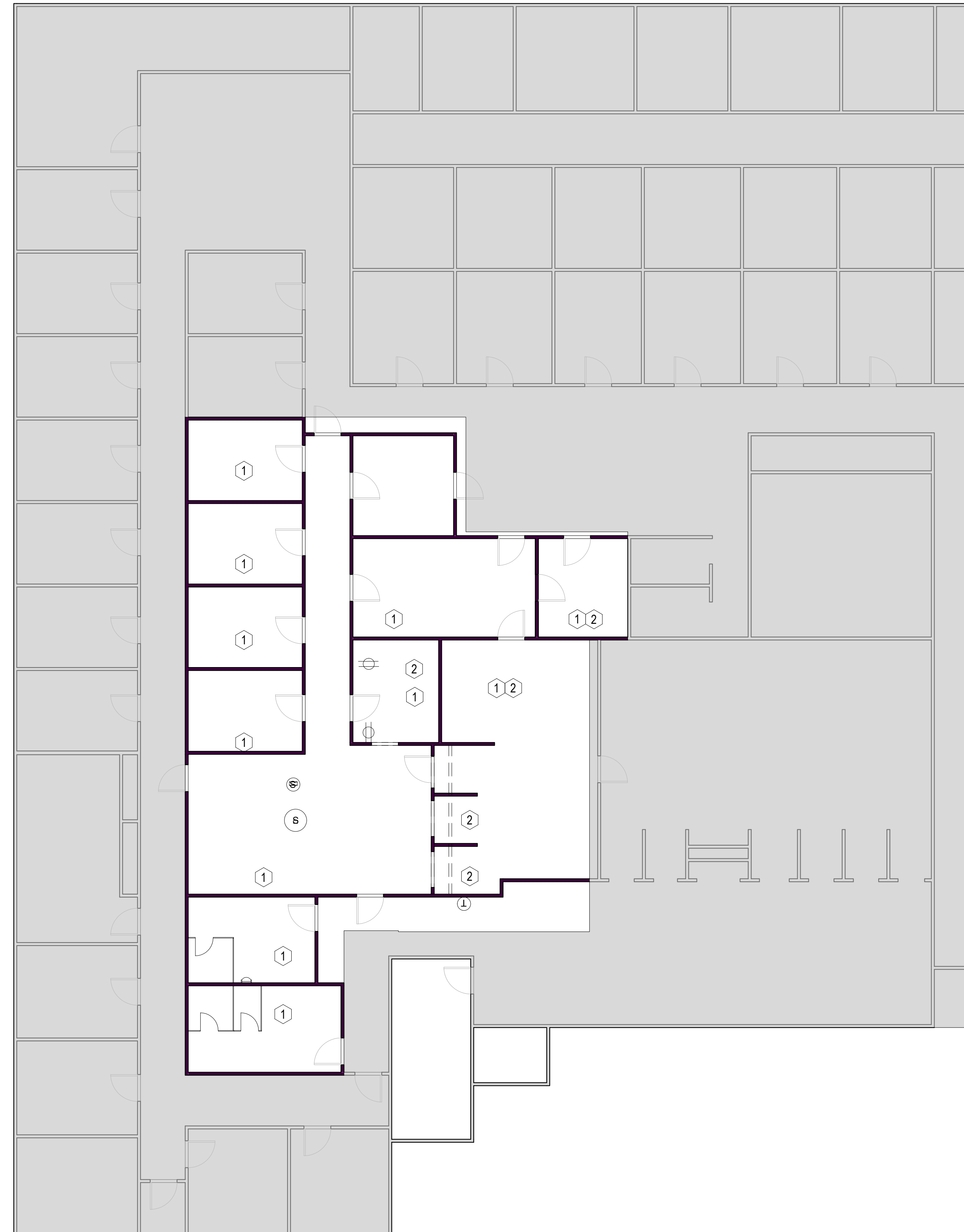
SYMBOL	REVISIONS DESCRIPTION	DATE	DRAWN	DESIGN	CHECK	SUBMIT	SCALE	PLOTTED

ELECTRICAL CONTRACTOR NOTES

1. ELECTRICAL CONTRACTOR SHALL PROVIDE TEMPORARY POWER TO SITE TO ALLOW CONSTRUCTION TO BEGIN ON DEMOLITION
2. ELECTRICAL CONTRACTOR SHALL REMOVE AND REPLACE EXISTING ELECTRICAL OUTLETS AS SHOWN ON PLANS
3. ELECTRICAL CONTRACTOR SHALL ABIDE BY ALL NEC AND SBCI CODES.
4. ELECTRICAL CONTRACTOR SUPPLY ALL MATERIALS NEEDED TO PERFORM WORK DESCRIBED.
5. ALL WORK SHALL COMPLY WITH APPUCABLE LOCAL, STATE AND NATIONAL CODES, LAWS, RULES AND REGULATIONS AND THEY ARE HEREBY MADE A PART OF THESE SPECIFICATIONS AS THEY ARE HEREIN WRITTEN IN FULL.
6. ALL CONTRACTOR'S WORK SHALL BE GUARANTEED FOR ONE YEAR FROM THE FINAL DATE OF ACCEPTANCE BY THE OWNER
7. ALL PERMITS, LICENSES AND FEES SHALL BE PAID BY THE CONTRACTOR.
8. CONTRACTOR IS RESPONSIBLE FOR THE REMOVAL, REPLACEMENT AND/OR REPAIR OF ALL NECESSARY ITEMS TO PERFORM WORK
9. CONTRACTOR SHALL VISIT SITE AND BECOME FAMILIAR WITH ALL EXISTING CONDITIONS THAT WILL AFFECT THE CONSTRUCTION SHOWN. IT SHALL BE ASSUMED THAT HE IS AWARE OF ALL EXISTING CONDITIONS AND HAS MADE SUCH PROVISIONS IN HIS CONTRACT.
10. INSTALL NEW CIRCUIT 100V PLUGS FOR NEW WALLS

GENERAL ELECTRICAL KEYNOTES

- ① INSTALL NEW STAINLESS COVER PLATES FOR SWITCHES AND RUGS
- ② INSTALL NEW CIRCUIT 110V PLUGS FOR NEW WALLS



① PROPOSED ELECTRICAL
1/8" = 1'-0"

REFLECTED CEILING PLAN

	LED FIXTURES		SPEAKER		EMERGENCY LIGHTS
	FIRE SPRINKLED HEAD		SUPPLY GRILLE		
	CEILING TILE 2'X4'		RETURN GRILLE		
	110V PLUG				

SYMBOL	REVISIONS DESCRIPTION	DATE	DRAWN	DESIGN	CHECK	SUBMIT	SCALE	PLOTTED

**PROPOSED
POWER PLAN**

ELECTRICAL CONTRACTOR NOTES

1. ELECTRICAL CONTRACTOR SHALL PROVIDE TEMPORARY POWER TO SITE TO ALLOW CONSTRUCTION TO BEGIN ON DEMOLITION
2. ELECTRICAL CONTRACTOR SHALL REMOVE AND REPLACE EXISTING ELECTRICAL OUTLETS AS SHOWN ON PLANS
3. ELECTRICAL CONTRACTOR SHALL ABIDE BY ALL NEC AND SBCI CODES.
4. ELECTRICAL CONTRACTOR SUPPLY ALL MATERIALS NEEDED TO PERFORM WORK DESCRIBED.
5. ALL WORK SHALL COMPLY WITH APPLICABLE LOCAL, STATE AND NATIONAL CODES, LAWS, RULES AND REGULATIONS AND THEY ARE HEREBY MADE A PART OF THESE SPECIFICATIONS AS THEY ARE HEREIN WRITTEN IN FULL.
6. ALL CONTRACTOR'S WORK SHALL BE GUARANTEED FOR ONE YEAR FROM THE FINAL DATE OF ACCEPTANCE BY THE OWNER
7. ALL PERMITS, LICENSES AND FEES SHALL BE PAID BY THE CONTRACTOR.
8. CONTRACTOR IS RESPONSIBLE FOR THE REMOVAL, REPLACEMENT AND/OR REPAIR OF ALL NECESSARY ITEMS TO PERFORM WORK
9. CONTRACTOR SHALL VISIT SITE AND BECOME FAMILIAR WITH ALL EXISTING CONDITIONS THAT WILL AFFECT THE CONSTRUCTION SHOWN. IT SHALL BE ASSUMED THAT HE IS AWARE OF ALL EXISTING CONDITIONS AND HAS MADE SUCH PROVISIONS IN HIS CONTRACT.



1 POWER PLAN
1/8" = 1'-0"

REFLECTED CEILING PLAN		
	LED FIXTURES	
	FIRE SPRINKLED HEAD	
	CEILING TILE 2'X4'	
	110V PLUG	

ELECTRICAL ABBREVIATIONS

A	AMPERES
AC	AIR CONDITIONING
AFF	ABOVE FINISHED FLOOR
AIC	AMPERES INTERRUPTING CAPACITY (MIN)
APPROX	APPROXIMATE
AWG	AMERICAN WIRE GAUGE
ANN	ANNUNCIATOR
BLDG	BUILDING
BPS	BOLTED PRESSURE SWITCH
C	CONDUIT
CAT	CATALOG
CATV	CABLE TELEVISION
CRT	CIRCUIT
CONT	CONTINUATION
CR	CARD READER
DD	DUCT DETECTOR
DIA	DIAMETER
DM	DIMENSION
DP	DISTRIBUTION PANEL
DWG	DRAWING
EA	EACH
EC	EMPTY CONDUIT
ELEC	ELECTRICAL
EMER	EMERGENCY
EMT	ELECTRICAL METALLIC TUBING
EOL	END OF LINE RESISTOR
EQUIP	EQUIPMENT
F	FUSED
FA	FIRE ALARM
FIN	FINISH
FIX	FIXTURE
FLUOR	FLUORESCENT
GF	GROUND FAULT INTERRUPTER
GRND	GROUND
HP	HORSEPOWER
IF	INSIDE FROST
IG	ISOLATED GROUND
INCAN	INCANDESCENT
J	JUNCTION
KVA	KILO-VOLT-AMPERE
KW	KILOWATT
LAHJ	LOCAL AUTHORITY HAVING JURISDICTION
LGT	LIGHT
M	METER
MATV	MASTER ANTENNA TELEVISION
MAX	MAXIMUM
MCM	THOUSAND CIRCULAR MILS
MDP	MAIN DISTRIBUTION PANEL
MIN	MINIMUM
MLO	MAIN LUGS ONLY
MPC	MINI POWER CENTER
MTD,MTG	MOUNT (ED),(ING)
N	NORTH
NEC	NATIONAL ELECTRICAL CODE
NIC	NOT IN CONTRACT
NO	NUMBER
NTS	NOT TO SCALE
OC	ON CENTER
OSHA	OCCUPATIONAL SAFETY AND HEALTH ADMINISTRATION
P	POLE
PC	PHOTO CELL
PMS	PROPERTY MANAGEMENT SYSTEM
PNL	PANEL
PVC	POLYVINYL CHLORIDE
RS	RAPID START
RSC	RIGID STEEL CONDUIT
SD	SMOKE DETECTOR
SIM	SIMILAR
S/S	STAINLESS STEEL
SPST	SINGLE POLE SINGLE THROW
T	TRANSFORMER
TC	TRAY CABLE
TBB	TELEPHONE BACKBOARD
TEL	TELEPHONE
TM	TV MONITOR
TYP	TYPICAL
UL	UNDERWRITER LABORATORIES UNLESS OTHERWISE NOTED
UON	
V	VOLT
W	WIRE
WP	WEATHERPROOF
WW	WARM WHITE
XFMR	TRANSFORMER

ELECTRICAL SYMBOL LEGEND

SYMBOL	DESCRIPTION	MTG.HT.	SYMBOL	DESCRIPTION	MTG.HT.
	ARROWHEAD INDICATES HOMERUN. X-1, 3, AND 5 ADJACENT TO HOMERUN ARROWHEADS INDICATES HOMERUN TO PANEL X. CIRCUIT NUMBERS 1, 3, AND 5.			SINGLE LIGHT FIXTURE WITH POLE	
	INDICATES CIRCUIT CONTINUATION OF CIRCUITS 3 AND 5 OF PANEL X.			TWIN LIGHT FIXTURE WITH POLE	
	MARKS ACROSS RACEWAY SYMBOLS INDICATE THE NUMBER OF NO.12 CONDUCTORS. UNLESS OTHERWISE NOTED. NO MARKS INDICATE TWO NO.12 CONDUCTORS. EQUIPMENT GROUNDING CONDUCTORS ARE NOT INDICATED BY MARKS, BUT ARE REQUIRED.			TRIPLE/ROTATION LIGHT FIXTURE WITH POLE	
	RACEWAY INSTALLED CONCEALED IN WALL AND/OR ABOVE CEILING			QUADRANT LIGHT FIXTURE WITH POLE	
	RACEWAY INSTALLED CONCEALED IN SLAB OR BELOW GRADE			TRIPLE LIGHT FIXTURE WITH POLE	
	RACEWAY INSTALLED EXPOSED			FLUORESCENT LIGHT FIXTURE, RECESSED/CLG. MTD./WALL MTD.	
	MULTIOUTLET RACEWAY ASSEMBLY			FLUORESCENT STRIP FIXTURE, CEILING MOUNTED	
	FLEXIBLE RACEWAY (6"-0" MAX LENGTH)			LIGHT TRACK AND LIGHT TRACK FIXTURES, QTY. AS SHOWN	
	CONDUIT UP / CONDUIT DOWN			MOTOR. "F" INDICATES FRACTIONAL HORSEPOWER.	
	CONDUIT STUB-UP ABOVE FINISHED FLOOR			NON-FUSIBLE DISCONNECT SWITCH. RATING/POLES/NEMA ENCLOSURE	
	CONDUIT TERMINATION (STUB-OUT)			FUSIBLE DISCONNECT SWITCH. RATING/POLES/FUSE SIZE/NEMA ENCL.	
	DUPLEX RECEPTACLE OUTLET	18"		MAGNETIC MOTOR STARTER. NEMA SIZE RATING / ENCLOSURE	
	DUPLEX RECEPTACLE OUTLET, BOTTOM SWITCHED	18"		CLOCK OUTLET	84" A.F.F.
	SINGLE RECEPTACLE OUTLET	18"		TELEVISION OUTLET - WALL MOUNTED	84" A.F.F.
	QUADRUPEX RECEPTACLE OUTLET	18"		MICROPHONE JUNCTION BOX - FLOOR MOUNTED	
	DUPLEX RECEPTACLE OUTLET- ABOVE COUNTER	6"ABV.BCKSPSLH		MICROPHONE JUNCTION BOX - WALL MOUNTED	18" A.F.F.
	FLOOR OUTLET WITH DUPLEX RECEPTACLE			THERMAL DETECTOR - WALL MOUNTED	
	G.F.C.I. DUPLEX RECEPTACLE OUTLET- WALL MOUNTED / ABOVE COUNTER	18" / 6"ABV.BCKSPSLH		INCANDESCENT OR FLUORESCENT WALL-WASH LIGHT FIXTURE, CEILING MOUNTED	
	ISOLATED GROUND DUPLEX RECEPTACLE OUTLET	18"		THERMAL DETECTOR - CEILING MOUNTED	
	TELEPHONE OUTLET, WALL MOUNTED / ABOVE COUNTER.	18" / 6"ABV.BCKSPSLH		INCANDESCENT, H.I.D., OR COMPACT FLUORESCENT LIGHT FIXTURE CEILING / WALL MOUNTED	
	TELEPHONE FLOOR OUTLET			UNDERGROUND PULLGROUND	
	SPECIAL PURPOSE RECEPTACLE OUTLET, NEMA CONFIGURATION AS REQUIRED BY EQUIPMENT TO BE CONNECTED.	18"		CEILING/WALL MOUNTED EXIT SIGN, DIRECTIONAL ARROWS AND NUMBERS OF FACES AS INDICATED ON PLANS	
	PROJECTION SCREEN SWITCH	48"		FIRE ALARM ANNUNCIATOR	
	SINGLE POLE SINGLE THROW TOGGLE SWITCH	48"		FIRE ALARM CONTROL PANEL	
	DOUBLE POLE DOUBLE THROW TOGGLE SWITCH	48"		FIRE ALARM VISUAL DEVICE	12" B.C.
	THREE-WAY TOGGLE SWITCH	48"		FIRE ALARM AUDIO/VISUAL DEVICE	12" B.C.
	FOUR-WAY TOGGLE SWITCH	48"		FIRE ALARM MANUAL INITIATING STATION, WALL MOUNTED	48" A.F.F.
	MOTOR RATED SWITCH	48"		SMOKE DETECTOR, WALL / CEILING / DUCT MOUNTED	12" BC
	CARD READER			HEAT DETECTOR, CEILING MOUNTED	
	DUCT DETECTOR			FIRE ALARM FLOW SWITCH	
	PRESSURE SWITCH			FIRE ALARM TAMPER SWITCH	
	MANUFACTURERS POWER CONVERTER FOR DOORS			FIRE DEPT. COMMUNICATIONS PHONE JACK	48" A.F.F.
	DATA/TELEPHONE COMMUNICATION OUTLET - WALL MOUNTED	18"		FIRE DEPT. COMMUNICATIONS PHONE JACK	48" A.F.F.
	WALL MTD. DOUBLE TELEPHONE/DATA OUTLET - WALL MOUNTED	18"		MAGNETIC DOOR LOCK DEVICE	
	FLOOR TELEPHONE/DATA OUTLET			DOOR HOLD OPEN DEVICE	
	DOORBELL - WALL MOUNTED	12" BC		MOTORIZED ROLL DOWN FIRE DOOR	
	PUSHBUTTON - WALL MOUNTED	48"		DIMMER SWITCH	48"
	UNDERFLOOR DUCT			3-WAY DIMMER SWITCH	48"
	JUNCTION BOX, WALL / CEILING / DUCT MOUNTED			WALL MTD./CLG. MTD. SPEAKER	12" BC/CLG
	2X4 FLUORESCENT FIXTURE - LAY-IN MOUNTED			COMBINATION MAGNETIC MOTOR STARTER AND DISCONNECTING MEANS. NEMA SIZE / RATING / ENCLOSURE / FUSE RATING	
	2X4 FLUORESCENT FIXTURE WITH EMERGENCY BATTERY - LAY-IN MOUNTED			CONNECTION TO VENTURI VALVE, 120V, INSTALL SINGLE POLE TOGGLE SWITCH IN NEMA. BOX ADJACENT FOR DISCONNECT. WALL MOUNTED	
	2X2 FLUORESCENT FIXTURE - LAY-IN MOUNTED			CONNECTION TO VENTURI VALVE, 120V, INSTALL SINGLE POLE TOGGLE SWITCH IN NEMA. BOX ADJACENT FOR DISCONNECT. CEILING MOUNTED	
	2X2 FLUORESCENT FIXTURE WITH EMERGENCY BATTERY - LAY-IN MOUNTED			REMOTE INDICATOR ALARM SWITCH - CEILING MOUNTED	
	EMERGENCY LIGHT - WALL MOUNTED	90" A.F.F.		120/208 VOLT PANELBOARD, FLUSH / SURFACE MOUNTED	
	1X1 FLUORESCENT FIXTURE			277/480 VOLT PANELBOARD, FLUSH / SURFACE MOUNTED	
	OUTLET AND FLUORESCENT, H.I.D. OR COMPACT FLUORESCENT LIGHT FIXTURE - CEILING MOUNTED			DRY TYPE TRANSFORMER	
	OUTLET AND FLUORESCENT, H.I.D. OR COMPACT FLUORESCENT LIGHT FIXTURE OVERHEAD - WALL MOUNTED			METER	
	OUTSIDE DUPLEX RECEPTACLE - WALL MOUNTED	18" A.F.F.		TELEPHONE OR DATA - PLYWOOD BACKBOARD	
	MOTOR			PUSH BUTTON SWITCH	42" A.F.F.
	TRANSFORMER W/ PADS			GROUND PER NEC ARTICLE 250	

NOTE: THIS IS A STANDARD LEGEND. ALL ITEMS SHOWN MAY NOT APPEAR ON DRAWINGS.

GENERAL NOTES:

- ALL WORK SHALL BE COORDINATED WITH THE WORK OF OTHER TRADES TO AVOID INTERFERENCES AND CONFLICTS. REFER TO THE DRAWINGS OF THE RESPECTIVE SYSTEMS PRIOR TO SUBMISSION OF BIDS FOR ADDITIONAL WORK WHICH MAY BE REQUIRED AS PART OF THIS WORK. NO ALLOWANCES WILL BE MADE FOR THE LACK OF COORDINATION BETWEEN DISCIPLINES OR SYSTEMS AND EQUIPMENT.
- ATTENTION IS CALLED TO THE FACT THAT THIS IS A RENOVATION WITHIN AN EXISTING BUILDING. WHEN THE WORK IS FINISHED, THE ELECTRICAL INSTALLATION SHALL BE COMPLETE IN EVERY RESPECT, COMPLETELY INTEGRATED WITH ALL THE EXISTING ELECTRICAL SYSTEMS. COORDINATION WITH THE ENGINEER IS REQUIRED FOR CHANGING OVER OF EXISTING LOADS. ALL EXISTING ELECTRICAL WORK REQUIRED TO REMAIN IN USE DURING AND/OR AFTER THE COMPLETION OF THE WORK SHALL BE EXTENDED, REROUTED, REPLACED, RECONNECTED OR OTHERWISE TO FIT INTO THE RENOVATED AREA AND LEFT IN SAFE WORKING ORDER. CONTRACTOR TO VERIFY LOAD OF EXISTING CIRCUITS. REMOVE ALL ELECTRICAL EQUIPMENT AND MATERIAL WHICH IS IN THE AFFECTED SPACE AND WILL NOT BE RE-USED BY THE RENOVATION.
- THE WORK SHALL BE COORDINATED WITH THE ENGINEERING DOCUMENTS FOR THE EXACT LOCATION OF LIGHT FIXTURES, EQUIPMENT, DEVICES, ETC. TO ASSURE PROPER PLACEMENT OF SAID DEVICES AND EQUIPMENT. WHERE A CONFLICT EXISTS BETWEEN ANY TWO DOCUMENTS, NOTIFY THE ENGINEER PRIOR TO ANY INSTALLATION FOR RESOLUTION.
- THE CONTRACTOR SHALL VERIFY ALL EQUIPMENT BEING INSTALLED PRIOR TO INSTALLATION TO ASSURE THAT THE FEEDER, DISCONNECT, STARTER, OVERCURRENT PROTECTION, ETC. MATCHES THE ACTUAL NAMEPLATE DATA AS SUPPLIED BY THE MANUFACTURER.
- SPECIFIC REQUIREMENTS REGARDING MATERIALS, WORKMANSHIP AND THE WORK TO BE DONE ARE COVERED BY THE SPECIFICATIONS WHICH COMPLEMENT THE PLANS. WORK CALLED FOR BY THE SPECIFICATIONS OR THE PLANS IS REQUIRED THE SAME AS IF REQUIRED BY BOTH. WHERE A CONFLICT EXISTS BETWEEN THE PLANS AND SPECIFICATIONS, THE MORE STRINGENT REQUIREMENTS OF THE TWO SHALL APPLY UNLESS SPECIFICALLY APPROVED IN WRITING BY THE ENGINEER.
- REFER TO EQUIPMENT CUT SHEETS AND MANUFACTURER'S DATA FOR ROUGH IN LOCATIONS OF ELECTRICAL CONNECTIONS AND INTERCONNECTIONS OF ALL EQUIPMENT.
- INSTALL OVER CURRENT PROTECTION AND BRANCH CIRCUIT WIRING PER U.L. LISTING REQUIREMENTS FOR EQUIPMENT SERVED - REFER TO NAMEPLATE DATA.
- PROVIDE START-UP ASSISTANCE TO OWNER PERSONNEL AND EQUIPMENT TECHNICIANS TO CONFIRM CORRECT PHASE ROTATION, PROPER OPERATION AND SEQUENCE, AND CONTROLS.
- CONTRACTOR SHALL COORDINATE ELEVATIONS AND PIPING SYSTEM SLOPES SUCH THAT DUCTWORK, PIPING, RACEWAY, CABLE TRAY, AND ASSOCIATED EQUIPMENT IS INSTALLED AT UNIFORM ELEVATIONS WITH MINIMAL OFFSET. PROVIDE COORDINATION DRAWING TO ENGINEER FOR REVIEW PRIOR TO EQUIPMENT ORDERS AND ROUGH-IN.

INDEX OF DRAWINGS

SHEET NO.	DESCRIPTION
E-1	ELECTRICAL LEGEND, ABBREVIATIONS, AND GENERAL NOTES
E-2	SITE PLAN - ELECTRICAL
E-3	ELECTRICAL SCHEDULES AND DETAILS



HALL ENGINEERING, LLC

4607 WOMACK
JACKSON MS 39209

PROJECT TITLE/LOCATION
LAUDERDALE COUNTY HEALTH DEPARTMENT
MERIDIAN, MS

REVISIONS	DATE	SYMBOL	DESCRIPTION	DRAWN	DESIGN	CHECK	SUBMIT	SCALE	PLOTTED

ELECTRICAL DETAILS